

THE OUTLET/LYE CREEK WATERSHED REPORT CARD

The Outlet/Lye Creek watershed is the most diversified watershed in the entire Blanchard River watershed. The watershed starts at the mouth of Potato Run where it flows into the Blanchard River. The Blanchard River flows northward for approximately 13 miles before making a 90 degree turn to the west in Riverbend Park east of Findlay. From this point the river flows westward for about 5.5 miles to Findlay. The watershed ends at the mouth of Eagle Creek. There are three main tributaries that flow into the Blanchard River within The Outlet/Lye Creek watershed. The Outlet enters the river where the river makes the 90 degree turn east of Findlay. The Outlet is a man-made ditch that runs from the Blanchard River eastward to Springville Marsh in Seneca County. The Outlet is about 8.5 miles long and was built to drain the land for farm use. Lye Creek starts between Mt. Blanchard and Arlington. It flows northward for about 5 miles before it turns and flows in a northwest direction for another 5 miles into Findlay. Brights Ditch enters the Blanchard River southeast of the Findlay Reservoirs on CR. 205. Brights Ditch runs from its mouth eastward for about 5 miles to an area north of Vanlue. Stahl's Ditch branches off Brights Ditch and flows for about 10 miles in a southeast direction into Wyandot County southeast of Vanlue. The eastern boundary of The Outlet/Lye Creek is the moraine that runs north-south just west of Carey. The western boundary is a slight ridge that follows State Route 68. The northern boundary is the moraine that runs east-west just north of Findlay. Pre-settlement vegetation consisted of beech, freshwater marshes and fens, mixed oak forests, and elm-ash swamp forests.

Watershed Facts:

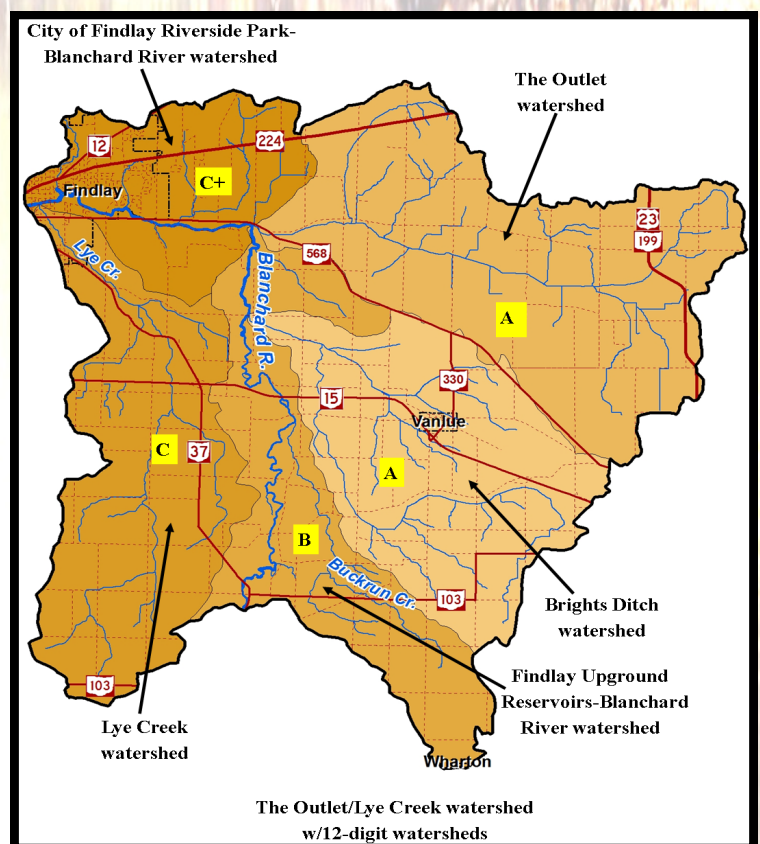
- ◆ average maximum temperature is 85°F
- ◆ average minimum temperature is 18-18.3° F
- ◆ average annual precipitation is 35-36 inches
- ◆ bedrock consists of dolostone (dolomite)
- ◆ wetlands comprise 1,994 acres
- ◆ ponds and lakes - 1,004 acres
- ◆ streams and rivers - 179 acres

The Outlet/Lye Creek Final Grade = **B**

The *causes of the impairments* include:

- ◆ nitrate/nitrites (Nitrogen)
- ◆ organic enrichment (sewage) biological indicators
- ◆ phosphorus (total)
- ◆ direct habitat alterations
- ◆ organic enrichment
- ◆ nutrient eutrophication biological indicators
- ◆ temperature, water

The *sources of the impairments* are:



The Outlet/Lye Creek Watershed (HUC 0410008 02)

Total Population	Cities & Villages in watershed	Total Square Miles	Total Acres	Priority Points	Watershed Score
18,361	Vanlue, Wharton, Findlay	132.9	85,144.90	NA	NA
Brights Ditch (HUC 0410008 02 01)					
2,211	Vanlue	28.4	18,200.80	2	Not Calculated
The Outlet (HUC 0410008 02 02)					
2,400	None	38.3	24,542.50	2	100
Findlay Upground Reservoirs-Blanchard River (HUC 0410008 02 03)					
983	Wharton	22.5	14,393.00	2	50
Lye Creek (HUC 0410008 02 04)					
4,055	Findlay	27.5	17,631.10	2	0
City of Findlay Riverside Park-Blanchard River (HUC 0410008 02 05)					
8,712	Findlay	16.2	10,377.50	0	0

School Districts completely or partially within this watershed are Arcadia Local, Arlington Local, Carey Exempted Village, Findlay City, New Riegel Local, Riverdale Local, Van Buren Local, and Vanlue Local.

Aquatic Life Use Attainment

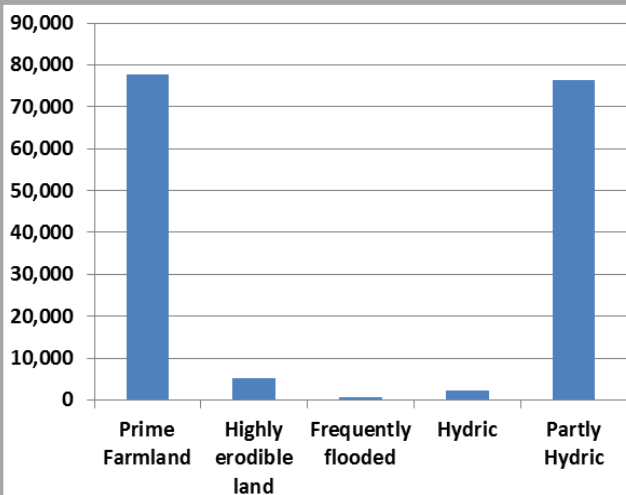
Designation indicating the waterbody provides suitable habitat for survival and reproduction of desirable fish, shellfish, and other aquatic organisms.

Brights Ditch - unknown

The Outlet – in attainment

Findlay Upground Reservoirs-Blanchard River - impaired

The Outlet/Lye Creek Soil Resources in Acres



Outlet Land Resources

