

# CRANBERRY CREEK WATERSHED REPORT CARD

If you look at the Blanchard River watershed as a whole, it looks a little like a pig. The Cranberry Creek watershed forms the head and front leg of that pig. Cranberry Creek starts just northwest of Beaverdam and runs for almost 17 miles north to the Blanchard River in Glandorf. The west boundary of the watershed runs along eastern side of a railroad line that runs south out of Ottawa. The southern boundary turns west running along road M and turns up to SR. 694 to the mouth with the Auglaize River west of DuPont. The top head of the pig is formed along the northern boundary. The boundary starts out north of SR. 613 before it crosses SR. 613 at SR. 108 and runs west along Road G. The tip of the snout of the head hits the southern tip of the Village of Continental.

## Watershed Facts:

- ◆ average maximum temperature is 85°F
- ◆ average minimum temperature is 17° F
- ◆ average annual precipitation is 36-37 inches
- ◆ bedrock consists of dolostone (dolomite)
- ◆ wetlands comprise 1,265 acres
- ◆ ponds and lakes - 91 acres
- ◆ streams and rivers - 276 acres

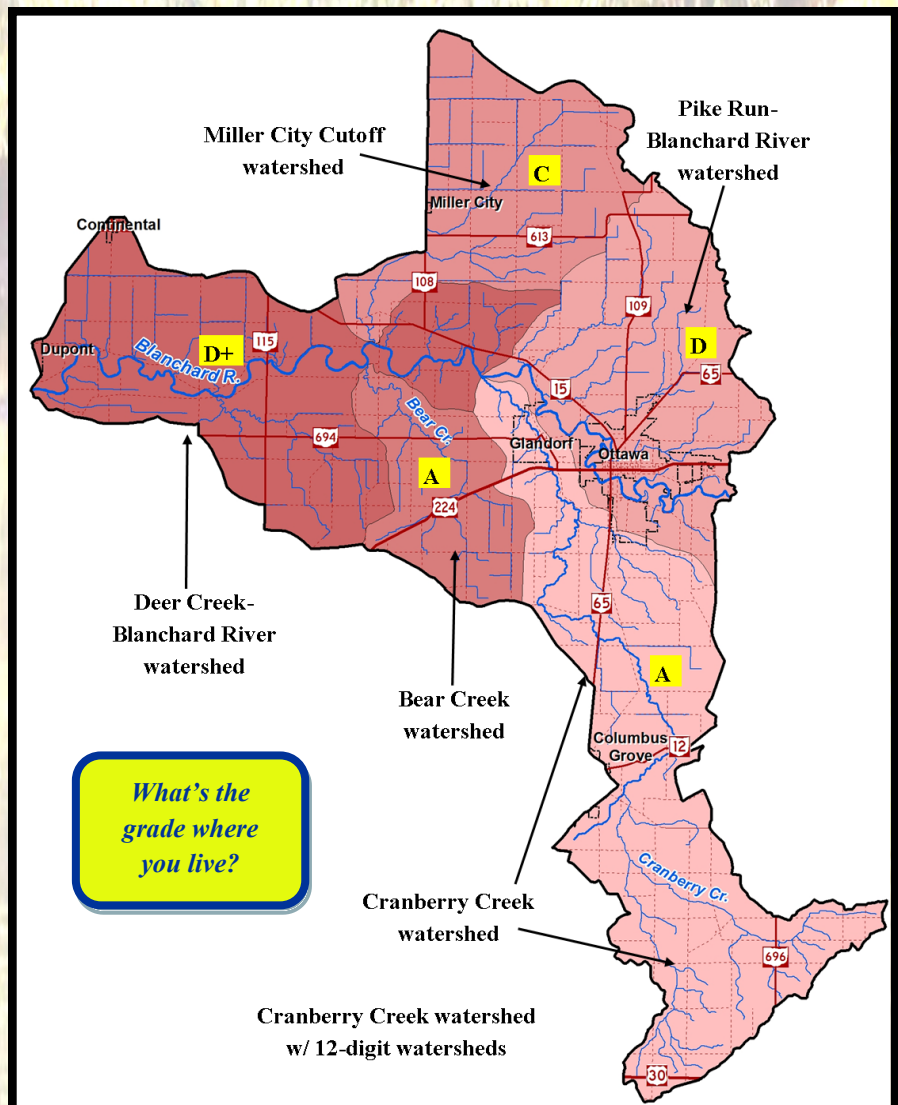
## Cranberry Creek watershed Final Grade = **C+**

The *causes of impairments* include:

- ◆ direct habitat alterations
- ◆ nitrates/nitrites (Nitrogen)
- ◆ organic enrichment (sewage) biological indicators
- ◆ phosphorus (total)
- ◆ low flow alterations
- ◆ ammonia (total)
- ◆ low dissolved oxygen
- ◆ sedimentation/siltation

The **sources of impairments** are:

- ◆ channelization
- ◆ crop production with

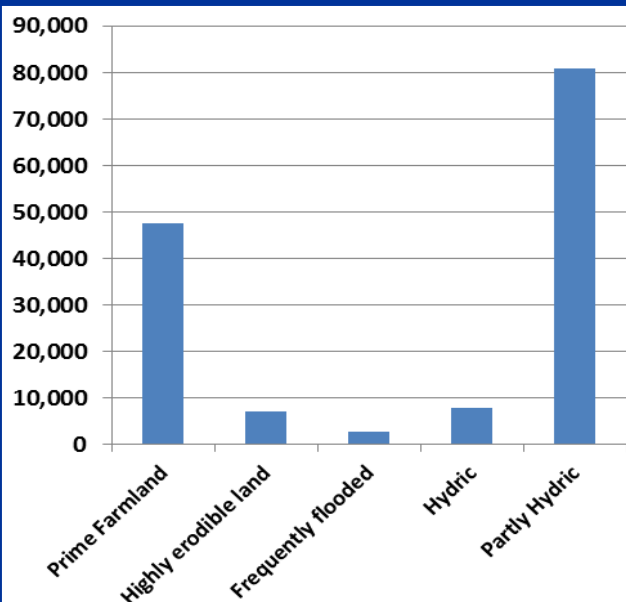


## Cranberry Creek Watershed (HUC 04100008 06)

Total	Cities & Villages	Total Sq. Miles	Total	Priority	Watershed
14,843	Columbus Grove, Glandorf, Ottawa, Miller City, Continental, DuPont	148.6	95,099.60	NA	NA
<b>Cranberry Creek (HUC 0410000 06 01)</b>					
4,623	Columbus Grove, Glandorf, Ottawa	45.3	28,969.40	0	100
<b>Pike Run-Blanchard River (HUC 0410000 06 02)</b>					
5,409	Glandorf, Ottawa	28.6	18,329.10	0	0
<b>Pike Run-Blanchard River (HUC 04100008 06 03)</b>					
1,361	Miller City	22.6	14,492.30	0	0
<b>Bear Creek (HUC 04100008 06 04)</b>					
1,194	None	12.7	8,112.30	0	Not Calculated
<b>Deer Creek-Blanchard River (HUC 04100008 06 05)</b>					
2,256	Continental, DuPont	39.4	25,196.50	0	0

School Districts completely or partially within this watershed are Bath Local, Bluffton Exempted Village, Columbus Grove Local, Continental Local, Kalida Local, Leipsic Local, Miller City-New Cleveland Local, Ottawa-Glandorf Local, and Pandora Gilboa Local

### Cranberry Creek Soil Resources in Acres



### Aquatic Life Use Attainment

Designation indicating the waterbody provides suitable habitat for survival and reproduction of desirable fish, shellfish, and other aquatic organisms.

**Cranberry Creek: in attainment**

**Pike Run-Blanchard River: impaired**

**Miller City Cutoff: impaired:**

### Cranberry Creek Land Resources

