

Small MS4 General Permit/ Individual MS4 Permit

MS4 is

A conveyance, or system of conveyances (including roads, catch basins, curbs, gutters, ditches, man-made channels or storm drains):

- ◆ Owned or operated by a public body
 - Traditional (city, county, township)
 - Non-Traditional (university, prison, ODOT)
- ◆ Designed and used for collecting/conveying storm water
- ◆ Is not a combined sewer
- ◆ Is not part of a Publicly Owned Treatment Works (POTW)

What does MS4 Permit require?

Develop SWMP & Implement BMPs

Six Minimum Control Measures (MCMs)

Develop/implement/enforce a program for:

- ◆ Public Education and Outreach
- ◆ Public Involvement and Participation
- ◆ Illicit Discharge Detection and Elimination
- ◆ Construction Site Runoff Controls
- ◆ Post-Construction Storm Water Management
- ◆ Pollution Prevention for Municipal Operations

Public Education/Public Participation

Rule:

- ◆ Education program about storm water pollution impacts & actions to reduce pollution
- ◆ Comply with state & local public notice/participation requirements



Public Education/Public Involvement

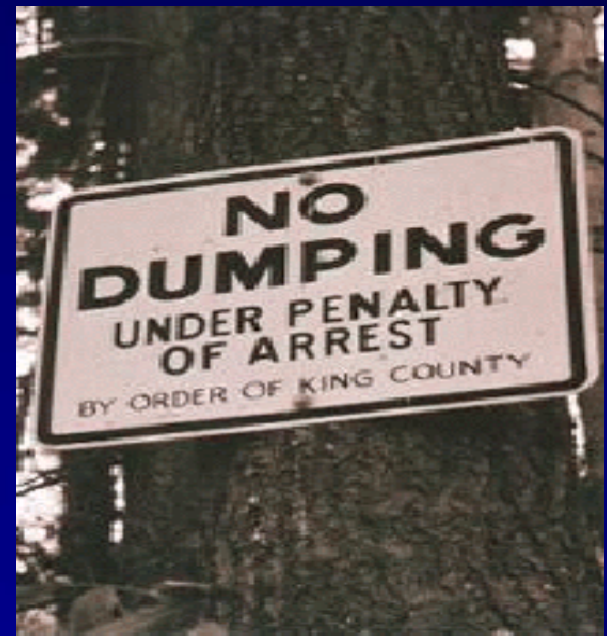
Performance Standards

- ◆ More than 1 outreach mechanism
- ◆ 5 different themes
- ◆ 1 aimed at development community
- ◆ Reach 50% of MS4 population
- ◆ At least 5 activities

Illicit Discharge Detection/Elimination Rule:

Rule:

Must develop, implement, & enforce a program to detect and eliminate illicit discharges



A "No Dumping" sign discourages illegal dumping by threatening arrest (Source: @Home Web Space, Neuskool, 2000)

Illicit Discharge Detection/Elimination SWMP must include:

- ◆ **Ordinance (or other regulatory mechanism)**
- ◆ **Storm Sewer System Map**
- ◆ **Plan (to detect & eliminate non-storm water discharges)**
 - ◆ **Must include dry weather field screening for non-storm water discharges**
 - ◆ **Must address HSTSs**

Construction Site Runoff Control

Rule:

Must implement & enforce a program to reduce pollutants in runoff from construction activities 1 acre or more.



Post-Construction Storm Water Management Rule:

Must develop, implement, & enforce a program for post-construction storm water management for new or redevelopment projects disturbing 1 ac. or more



Construction & Post-Construction SWMP must include:

- ◆ **Ordinance (or other regulatory mechanism)**
 - ◆ **Address Sediment and Non Sediment Pollutants**
 - ◆ **Address post-construction runoff from new & redevelopment**
- ◆ **Plan review**
- ◆ **Inspections during construction**
- ◆ **As Built Inspection for Post-C**
- ◆ **Plan to ensure adequate long term O & M**

Pollution Prevention for Municipal Operations

Rule:

Must develop & implement operation and maintenance program

- ◆ **Must include employee training**
- ◆ **Procedures for proper waste disposal**



P2 for Municipal Operations

SWMP must specifically address:

- ◆ **Maintenance activities, schedules, and long term inspection protocols for controls to reduce floatables & other pollutants**
- ◆ **Procedure to assess new & existing flood control projects for water quality**
- ◆ **Controls to reduce pollutants from streets, parking lots, storage yards, waste transfer stations, etc.**





For More Information

Ohio EPA Northwest District Office:

Lynette Hablitzel (419) 373-3009

**(Allen, Ashland, Crawford, Erie, Hancock, Hardin,
Huron, Lucas, Marion, Putnam, Richland, Seneca,
Wyandot)**

lynette.hablitzel@epa.state.oh.us